



Photovoltaic mounting system for **flat roofs**

Quick and easy installation

No roof penetrations

Aesthetically clean solution

More active PV module area per m² roof area

Low-cost

Proven mounting system

FORMSOL mounting system

A LASTING BOND

The PV mounting system FORMSOL has been developed specifically for flat roofs. The aim was an appealing integration of photovoltaic panels in the flat roof of a building. The angle of inclination of the solar modules is only 3° or optionally 8°. This results in a very high energy yield per roof area.

The FORMSOL elements made of polyethylene are installed in an overlapping pattern and, in accordance with the system layout, are placed over the entire area of the leak-proof roof covering. Along the edges they are connected with each other via a stud system. This installation enables a quick and easy installation of the supporting construction on flat roofs.

To ensure wind resistance, the FORMSOL elements are weighted down with roof gravel or roof panels.

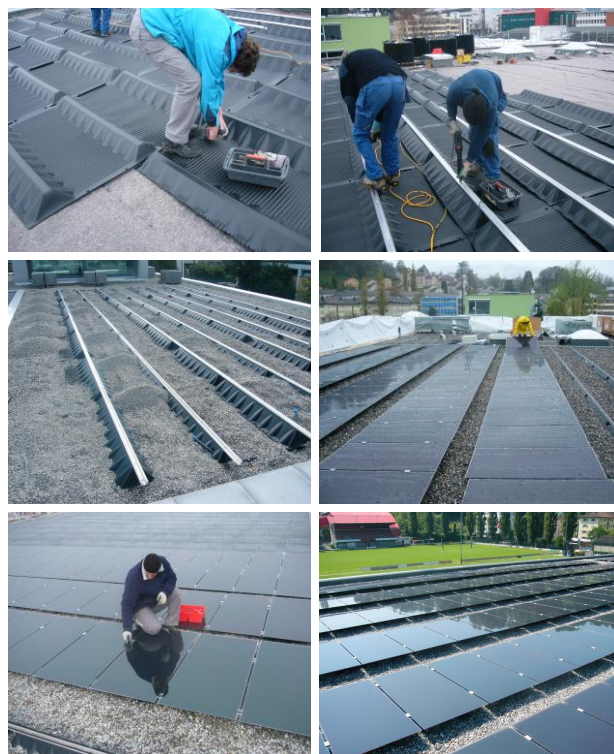
Aluminium sections in 3° or 8° design – depending on the desired module tilt – are riveted onto the FORMSOL elements and the cable harnesses are installed.

After this, the solar modules are mounted quickly and easily to four attachment points using the FORMSOL springs. Finally, the electrical connection is created.

The FORMSOL mounting system is suitable for both framed and frameless solar modules, especially for thin-film modules.

- *Mounting of framed and frameless PV modules*
- *Vertical as well as horizontal mounting options of modules*
- *All PV modules on the market can be used*
- *Durable mounting construction*

SIMPLE – QUICK – INGENIOUS



NO ROOF PENETRATIONS

For the FORMSOL mounting system, no roof penetrations or fixtures are necessary. This means that the roof covering is irrelevant when choosing FORMSOL as the supporting construction. The FORMSOL elements can be used for any type of flat roof. However, we recommend that you first lay a separating fleece between the leak-proof roof covering and the FORMSOL elements.

Choosing FORMSOL as the supporting construction means being independent, highly flexible and able to make quick decisions.

FORMSOL offers a complete, flexible and optimal mounting solution for your solar modules on a flat roof.

LOW-COST

The simplicity of the FORMSOL mounting system keeps the costs for the supporting construction very low and thus enables a cost-efficient and attractive PV module mounting system.



FORMSOL element

Weather-resistant, robust PE elements as the supporting construction
 No damage to the roof covering
 Integrated in flat roof
 Additional protection of the roof membrane

AESTHETICALLY CLEAN SOLUTION

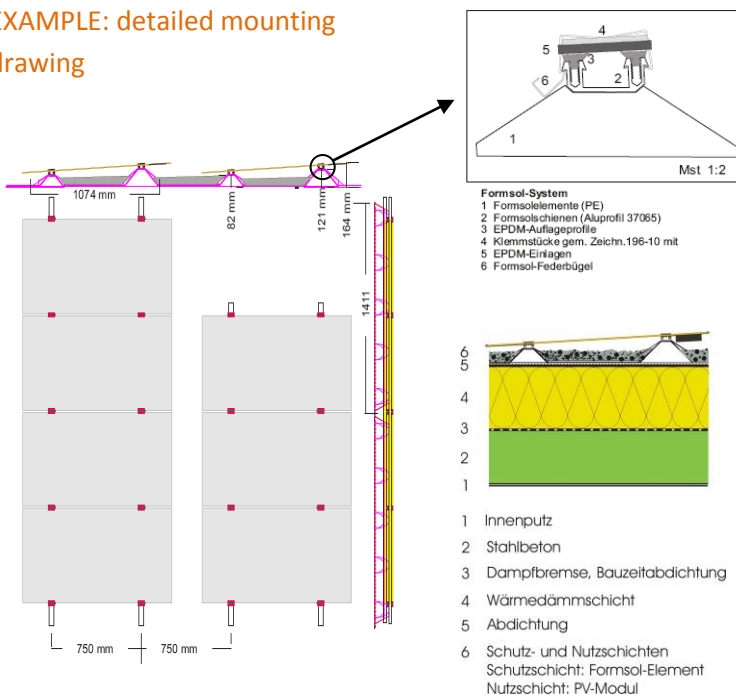
The FORMSOL mounting system enables an aesthetically clean integration of the photovoltaic system in the flat roof. The module inclination is either 3° or 8°.



FORMSOL spring clip

Quick and easy installation of modules

EXAMPLE: detailed mounting drawing



Aluminium rail

FORMSOL aluminium sections for 3° or 8° module installation.



CONSULTING

SUPPORT

SALES

For questions, planning, projecting and selling of the FORMSOL mounting system, we will be happy to assist.

For larger modules we recommend our Formsol¹⁶⁰ mounting system.

EXAMPLES / REFERENCE SYSTEMS



Photovoltaic system on school in Hirzenbach in Zurich



Photovoltaic system for the Lucerne Spieleute pavilion



Largest FORMSOL system in Europe, Neckarhausen, GE



PV Integ AG
Reussstrasse 7
6038 Gisikon

Phone: +41 (0)41 310 50 30
E-mail: info@pvinteg.ch
www.pvinteg.ch

Your sales partner:

